

# RUINED BUILDING - E

## ASSEMBLY INSTRUCTIONS



**Before starting this kit, make sure you read through all the instructions carefully.** Always remember to dry fit parts and sand as needed.

This kit comes with a TON of extra rubble bits (wood planks, bricks etc.) Glue them however you want!

We use two kinds of glue when assembling our kits. Super glue (cyanoacrylate) or PVA glue.

You can repaint or weather our kits easily! The paint we use is a great base primer and will take paint nicely.

If you have any issues during assembly, please contact us and we'll always help!

We would like to take the time to thank you for purchasing a Black Site Studios product!

[www.blacksitestudio.com](http://www.blacksitestudio.com)

### WE SUGGEST HAVING THESE TOOLS ON HAND



### IMPORTANT SYMBOLS YOU'LL FIND ON YOUR JOURNEY



ATTENTION



DRY FIT



NO GLUE



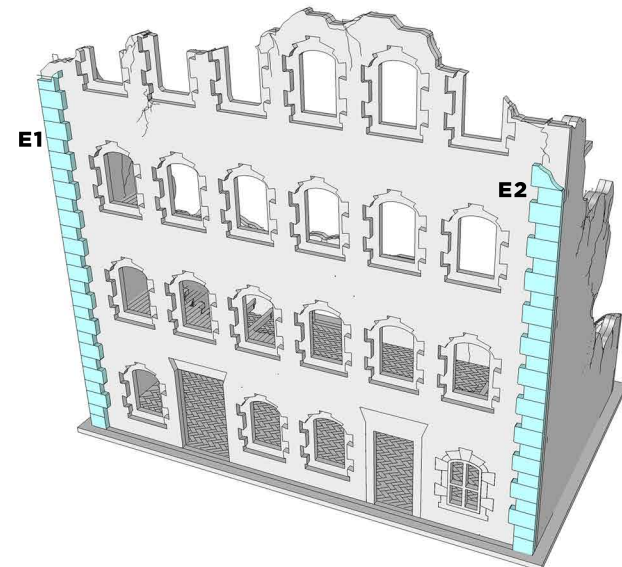
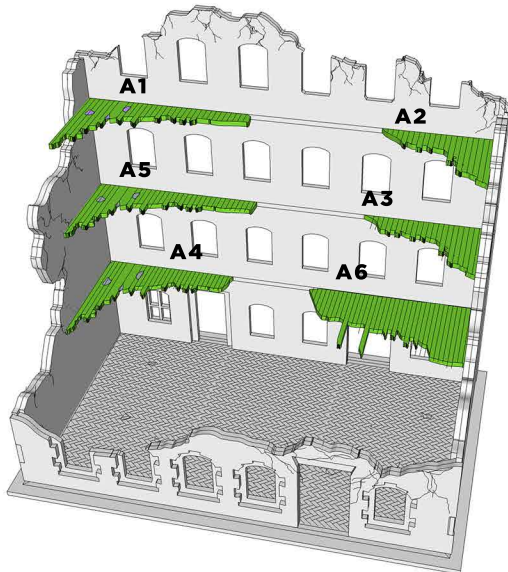
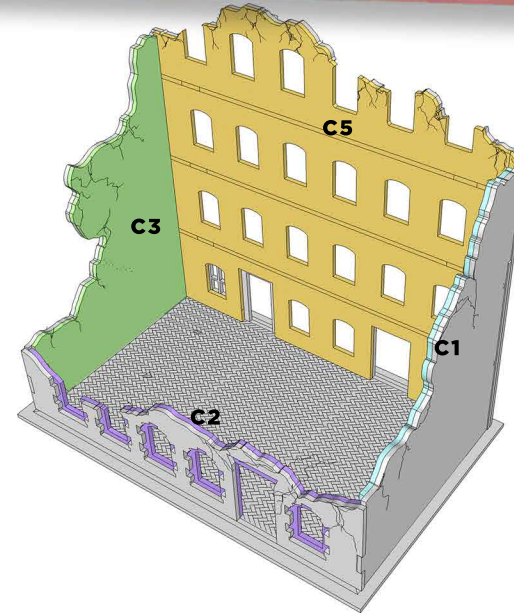
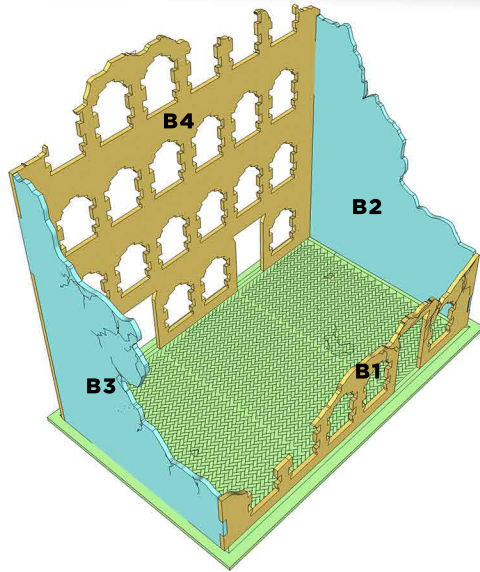
GLUE



TRIM/SAND

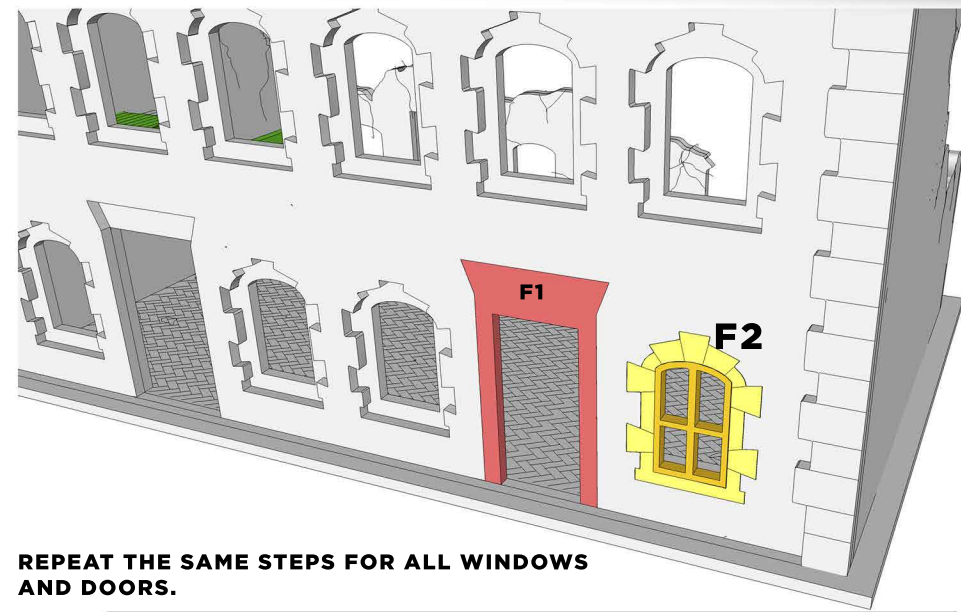
# RUINED HOUSE E

PAGE 1



# RUINED HOUSE E

PAGE 1



**REPEAT THE SAME STEPS FOR ALL WINDOWS  
AND DOORS.**

---